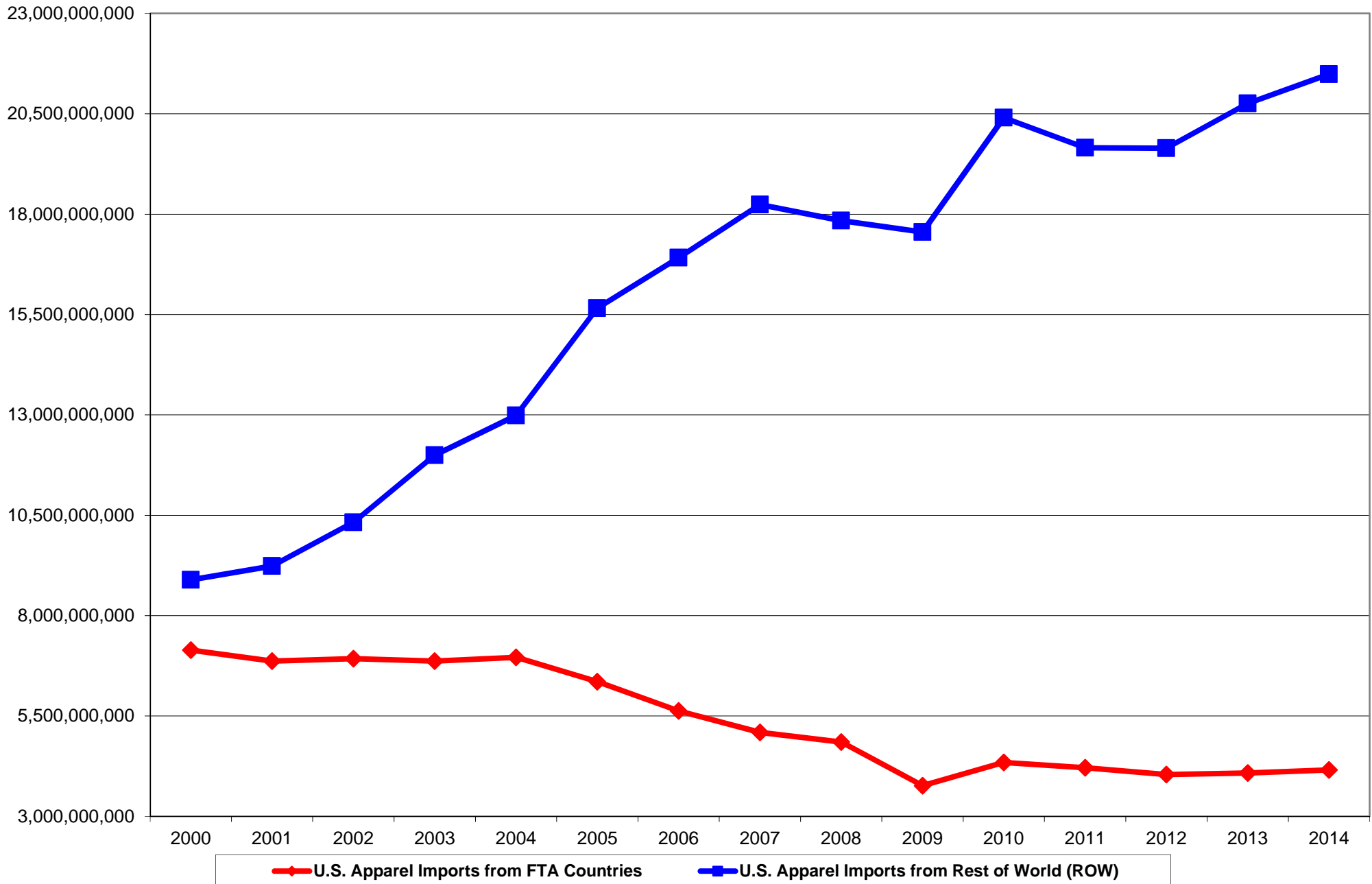


U.S. Apparel Imports from FTA Countries* Vs. Rest of World (ROW)

2000-2014, Actual Square Meter Equivalents (SMEs), March 6, 2015



Source: Office of Textiles and Apparel (OTEXA), U.S. Department of Commerce.

Note: FTA Countries* includes all implemented U.S. FTAs that have "yarn-forward" rules (does not include